

Comparison of Numerical Performance of Mathematica 13.1 and Maple 2022

Summary

While Maple claims support for a significant subset of the numerical computations performed by Mathematica, in most cases, much faster methods have been implemented in Mathematica.

Over a test suite of 828 tasks, covering different operations on different types of numerical data, Mathematica was faster in 815 cases. The median difference measured found Mathematica to be more than 67 times faster than Maple.

Category	Tests	Median Mathematica speed
Elementary & special functions	105	3,327 times faster
Elementary & special functions (manual type override)	105	20 times faster
Elementary & special functions (sparse data)	105	5,500,000 times faster
Complex elementary & special functions	105	56 times faster
Complex elementary & special functions (manual type override)	105	37 times faster
Elementary & special functions (50 digits)	105	69 times faster
High-precision function evaluation	9	37 times faster
Real data operations	24	3 times faster
Real data operations (manual type override)	24	27% faster
Sparse real data operations	7	63,000 times faster
Upper triangular real data operations	14	11 times faster
Complex number data operations	20	57% faster
Complex number data operations (manual type override)	20	58% faster
Integer data operations	16	34 times faster
Integer data operations (manual type override)	15	35 times faster
Extended precision data operations (50 digits)	20	10 times faster
Extended precision data operations (1,000 digits)	20	4 times faster
Random number generation	9	20 times faster
All tests	828	67 times faster

Tests were performed using Mathematica 13.1 and Maple 2022 running on Windows 10 Pro 64-bit with a 3.07 GHz quad-core Intel i7 950 processor with 24 GB of RAM.

Function Evaluation

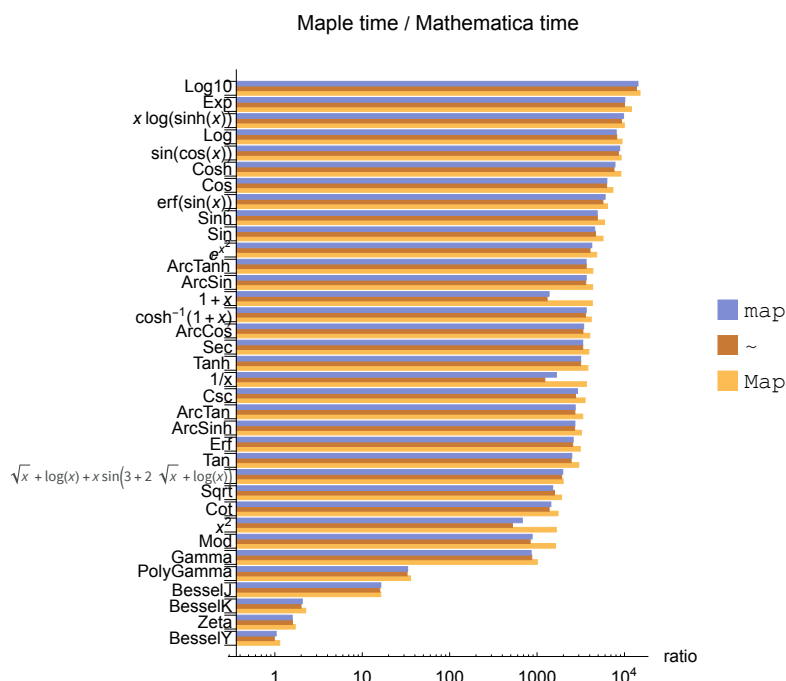
Getting Maple to apply numerical functions to data with optimal performance is a complicated task with a choice of tools for mapping the functions over the data and a choice of data types. Different circumstances require different choices and are often a tradeoff between performance and flexibility and code robustness. In the following tests, each combination of the Maple commands `map`, `Map` and `~` together with appropriate default and manual data specifications have been compared to Mathematica's `Map` command applied to Mathematica's default data type.

Maple's `map` command is functionally equivalent to Mathematica's `Map`, while Maple's `Map` is destructive (it replaces the original data so extra work would be needed if one wanted to preserve or reuse the input data).

Reals

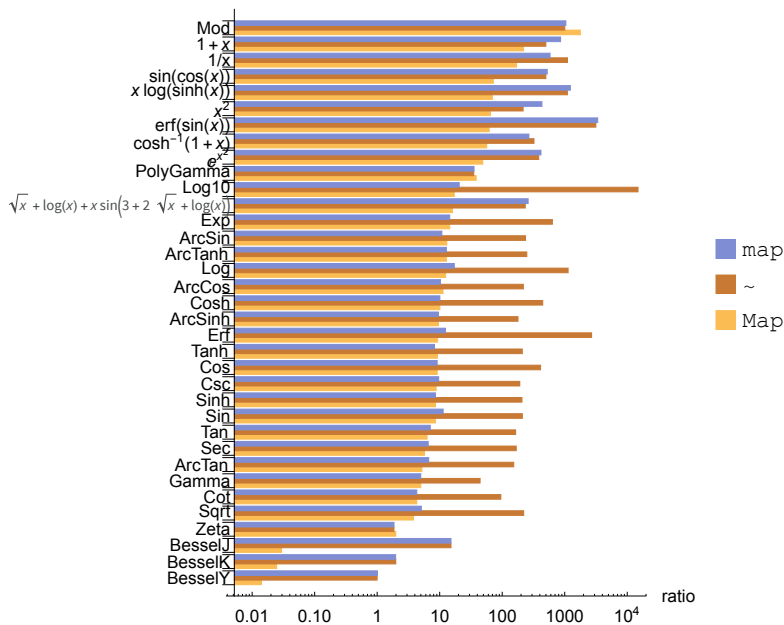
Using the default data type to represent data (as most users would), Maple is generally extremely slow compared to Mathematica, with the exception of Bessel functions.

Times to evaluate functions over 10^5 real numbers are compared below.



Better performance can be achieved in Maple by manually specifying (or converting) data to the `float[8]` data type, and in most cases using `Map`. However, this comes at considerable cost to flexibility. Firstly, you must ensure that all the input data consists of machine reals. Code will fail if you attempt to store a value that is complex, symbolic, string or NaN. More importantly, code will also fail completely if any single computation, using `Map` or `~`, returns a value that is not real. This means that you can use this approach only when you can completely predict the domain of both the input and output data. For this reason, the tests have been performed on random numbers in the range $[0,1]$. Input outside of this range will cause some of these tests to fail in Maple. Maple's `map` function, while more robust, is usually many times slower than Mathematica.

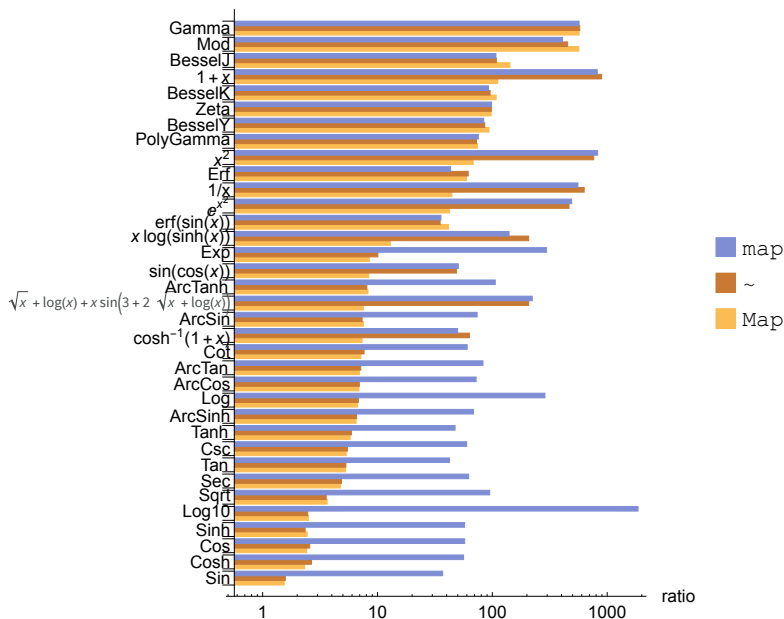
Maple time / Mathematica time



Complexes

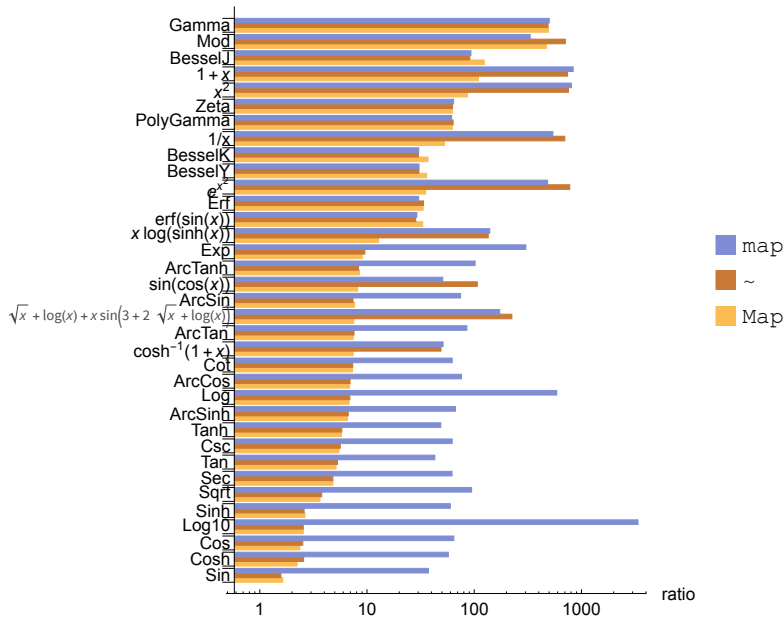
For operations on complex numbers, Maple is often only modestly slower than Mathematica when using Map or ~ to apply single built-in functions. For composite functions and some special functions, the difference is much greater. When using map (the direct equivalent of Mathematica's Map command), Maple is consistently much slower than Mathematica.

Maple time / Mathematica time



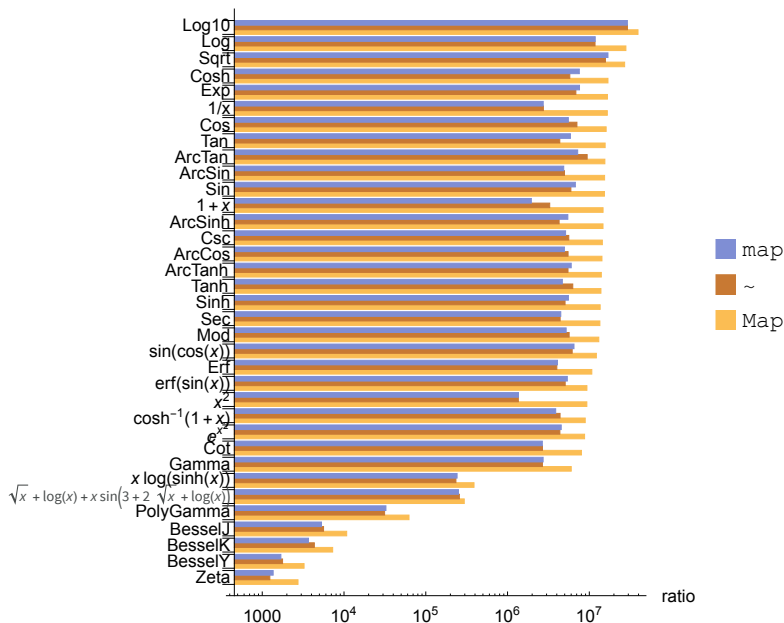
There is a small benefit to using the complex[8] data type for Maple's Map and ~ commands at the cost of slowing down some operations using map.

Maple time / Mathematica time



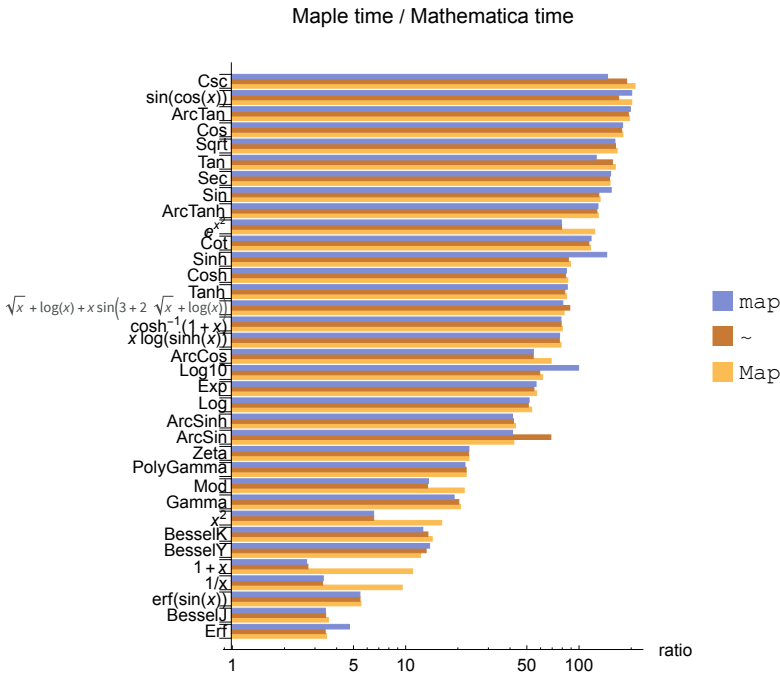
While Maple can represent sparse data efficiently, none of `map`, `Map` or `~` apply efficient algorithms for sparse data.

Maple time / Mathematica time



Extended precision

When working in 50-decimal-place extended arithmetic, it makes little difference how you apply functions in Maple. The median performance is 69 times slower than Mathematica.



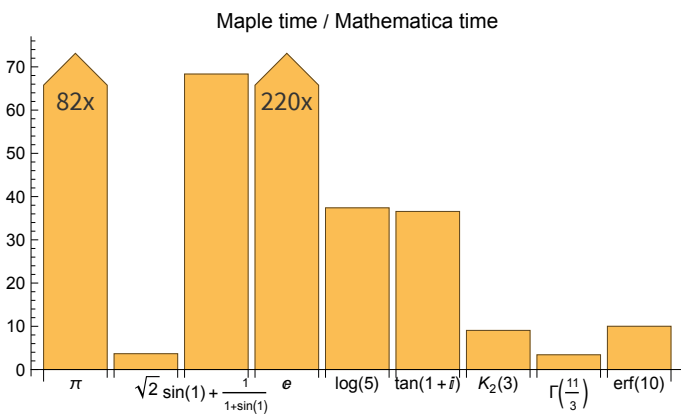
Getting the best performance out of Maple requires significant system knowledge and carefully chosen manual intervention. In contrast, all Mathematica computations were performed using the same function and the same automatic data type and still outperformed Maple in almost every test.

Implementation notes

Tests performed on a vector of 10^5 uniform random numbers in the interval $[0,1]$ for real data tests, $[-10,10]$ for integers and $[-10,10]+i*[-10,10]$ for complex data. Sparse data tests performed on a vector of 10^{10} reals with a sparsity ratio of 1:10000 in Mathematica and 10^6 reals in Maple with timings scaled accordingly.

High-Precision Evaluation

When evaluating numeric expressions to very high precision, Mathematica provides automatic precision tracking to ensure that it achieves the target number of correct digits (as opposed to just using input with the target number of digits). The examples in this test were too simple for this to matter, but despite this extra verification work, Mathematica evaluated the following expressions to high precision with a median performance 37 times faster than Maple.



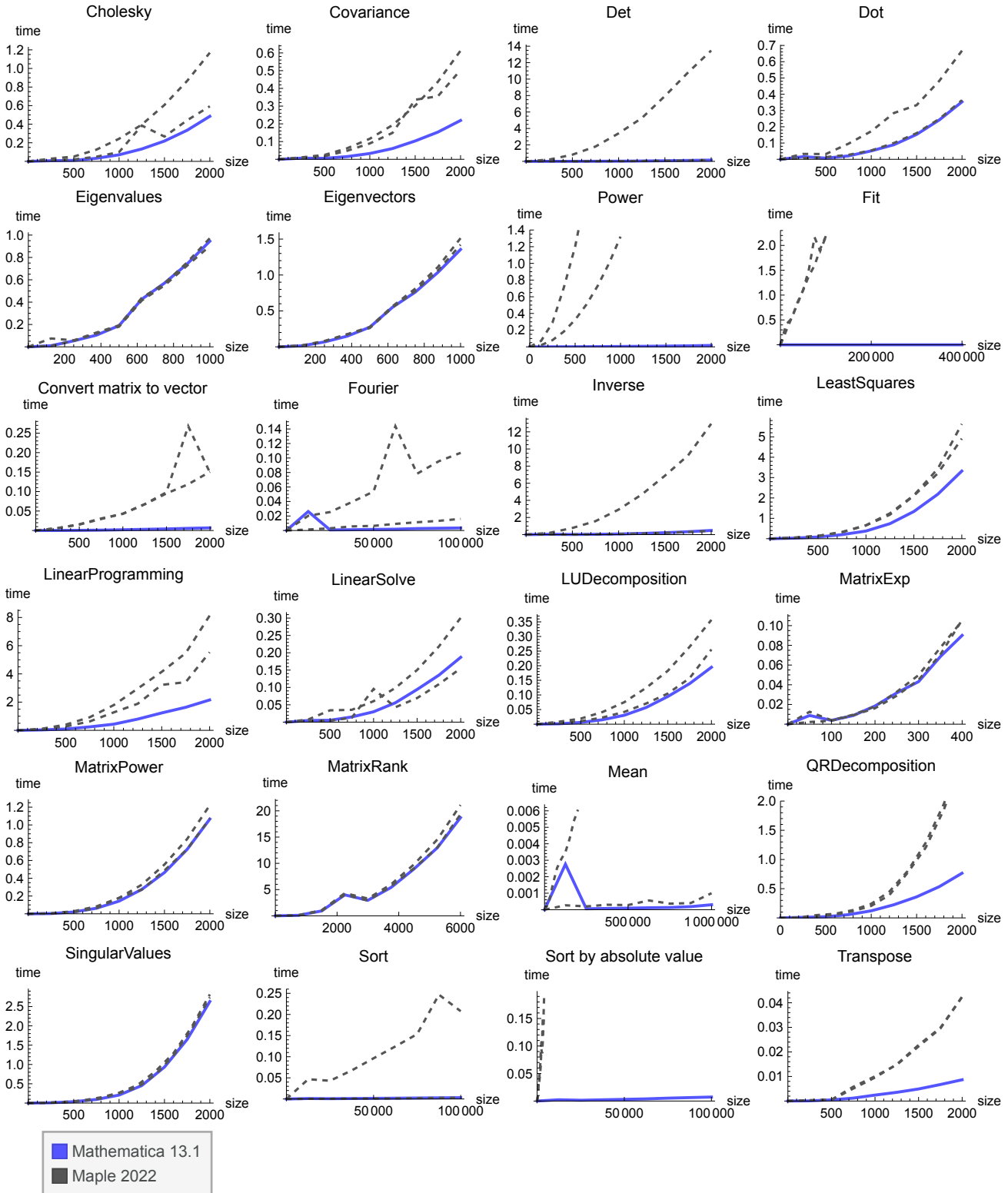
Implementation notes

BesselK, Gamma and Erf calculations were evaluated to 5,000 digits. Other expressions were evaluated to 1,000,000 digits.

Machine-Precision Real Linear Algebra

To achieve the very best performance in Maple, you must often use manual type control. This requires declaring items in a dataset to all be of the same number type as it is initialized. The penalty of this approach is that such Maple code will fail if any value is used that does not comply with the type declaration. Since it is not always easy to predict whether operations will potentially yield complex numbers, large numbers or symbolic results, the default data type for all Maple operations is “anything,” and most user code uses this type. Both manual and default Maple data type timings are shown in these comparisons.

Mathematica operations are 27% faster than Maple’s inflexible (`float[8]`) data type and more than 3 times faster than its default type.

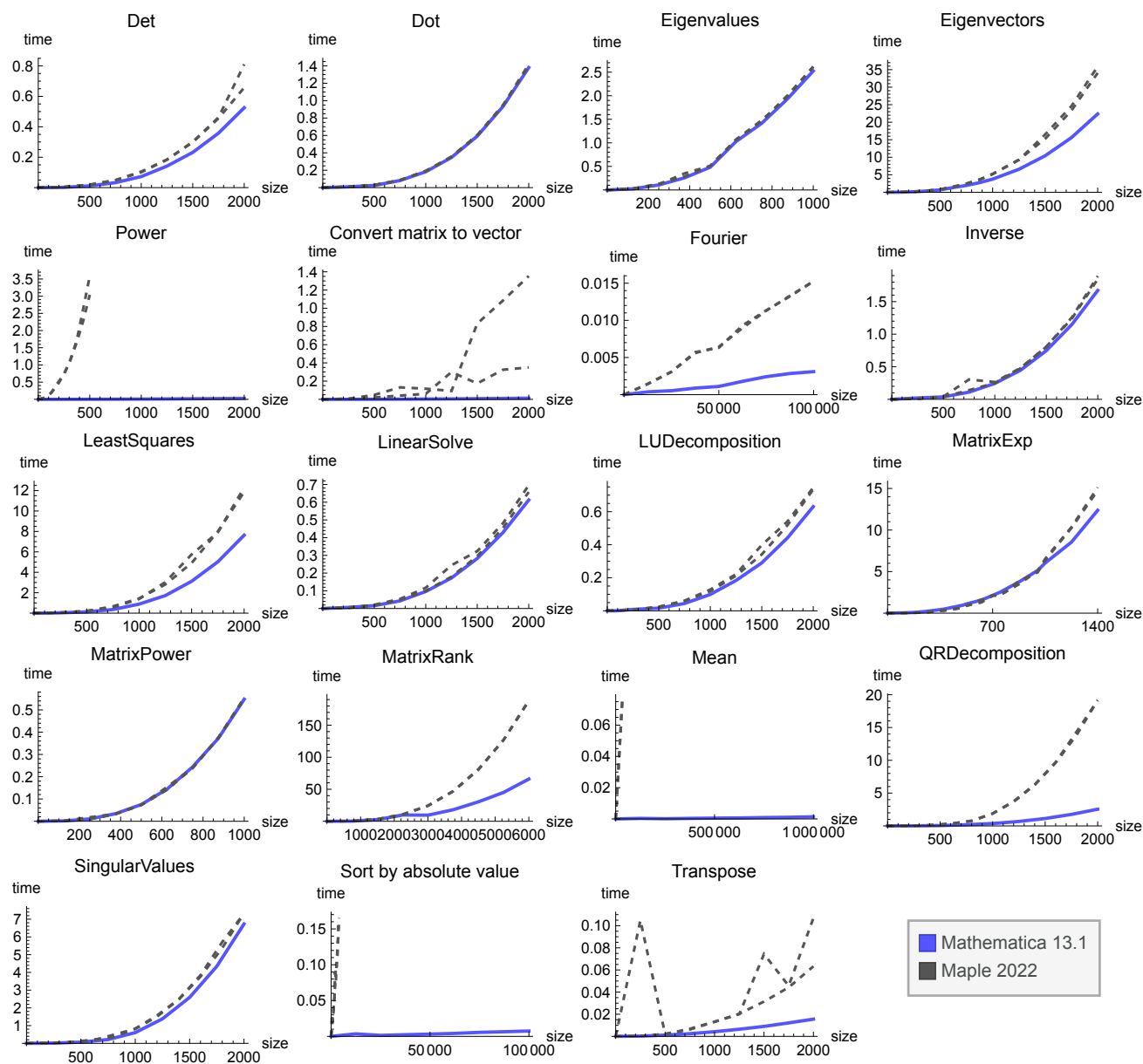


Implementation notes

All tests were performed using the documented commands in each system.

Machine-Precision Complex Linear Algebra

For complex numbers, there is little advantage to manually setting the data type in Maple. Mathematica is more than 2 times faster.



Implementation notes

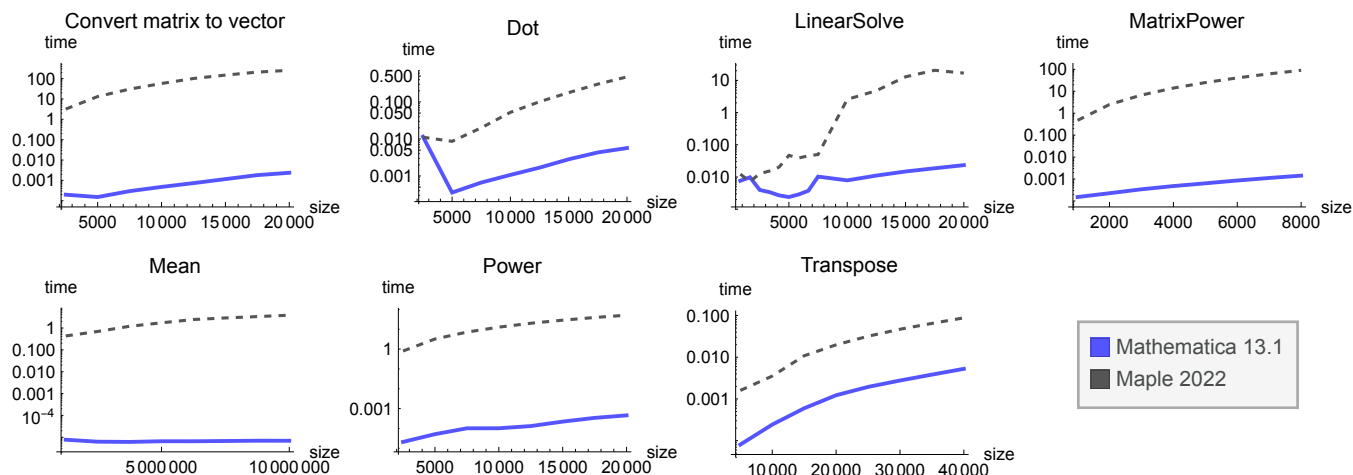
Functions in Maple's `Statistics` packages work only on real numbers. For this reason, the `Student[Statistics]:-Mean` operation has been used.

All other tests were performed using the documented command in each system.

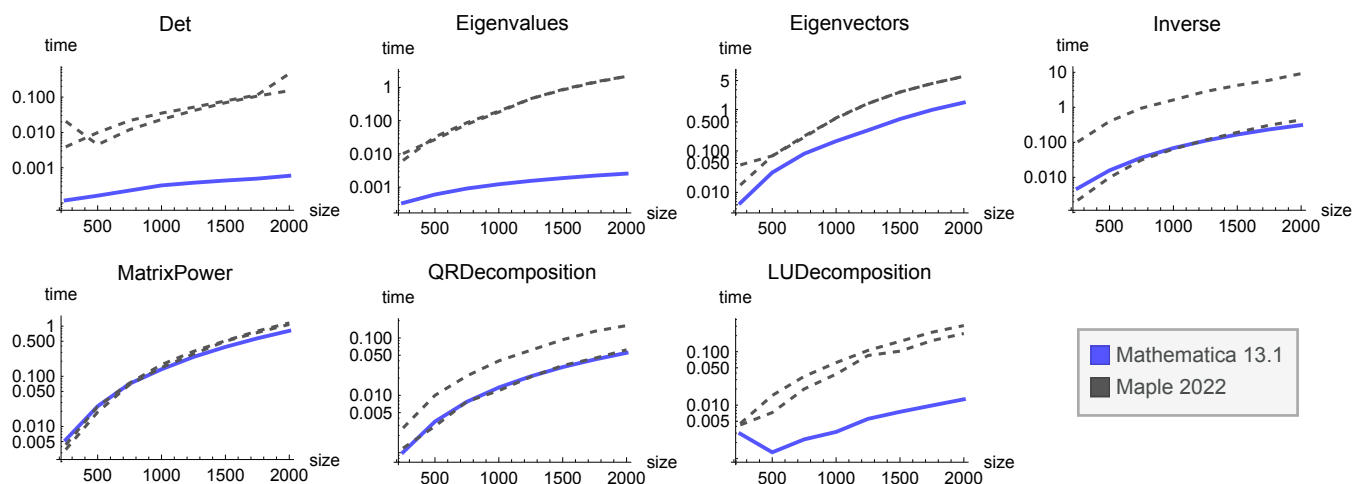
Sparse and Structured Data

Maple and Mathematica both provide sparse data storage; however, Maple appears to have only implemented sparse methods for `LinearSolve` and `Transpose`. During the test, Maple's `LinearSolve` command generates a large number of messages stating, "Warning, solution did not converge within 200 iterations," suggesting that it may not have completed the task for some problem sizes.

Note that data is shown on a log scale, since the difference in performance is too great to display on a linear scale.



Some linear algebra operations have fast algorithms for partially sparse structured arrays such as upper triangular matrices. These have been implemented in Mathematica, giving it a greater speed advantage for these common cases.

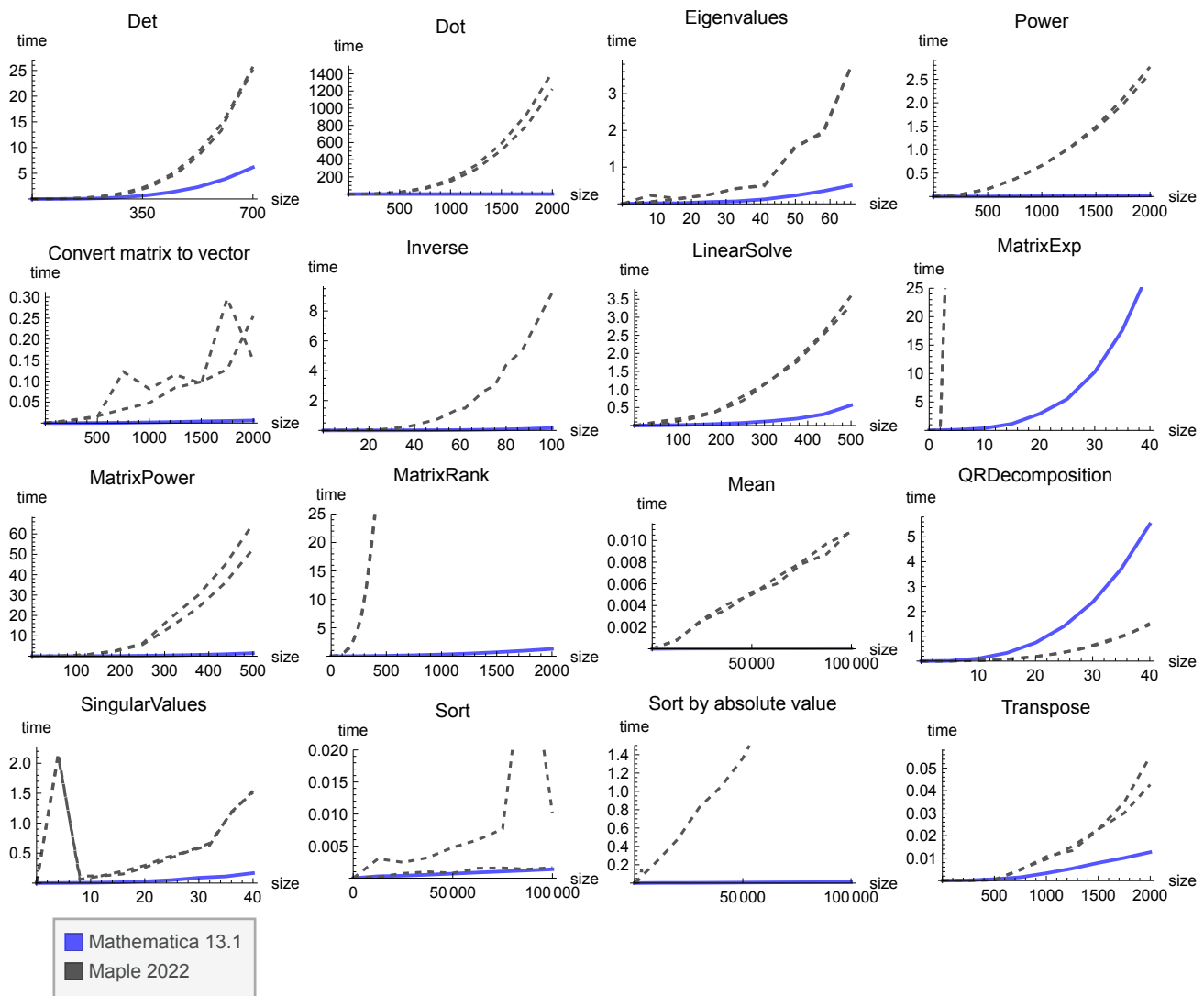


Implementation notes

Tests for which neither system has sparse or structured data methods have been omitted since these would be a repeat of the dense tests above.

Integer Linear Algebra

Both Mathematica and Maple can perform exact integer arithmetic; however, again the Maple implementation does not seem to include many optimized integer algorithms. One of the biggest differences is seen with perhaps the most important matrix operation—multiplication (`Dot`)—where Mathematica was more than 3,200 times faster. The median difference measures Mathematica to be more than 35 times faster when Maple is used with the special `integer[8]` data type and more than 34 times faster when it is not.



Implementation notes

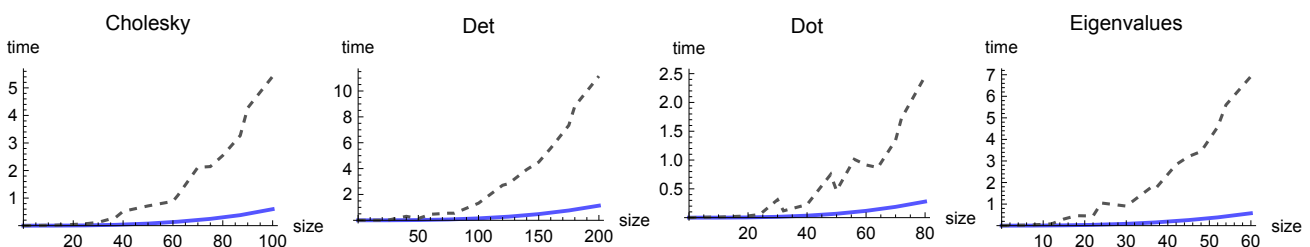
Functions in Maple's `Statistics` packages work only on real numbers. For this reason, the `Student[Statistics]:-Mean` operation has been used and the `Fit` test has been omitted.

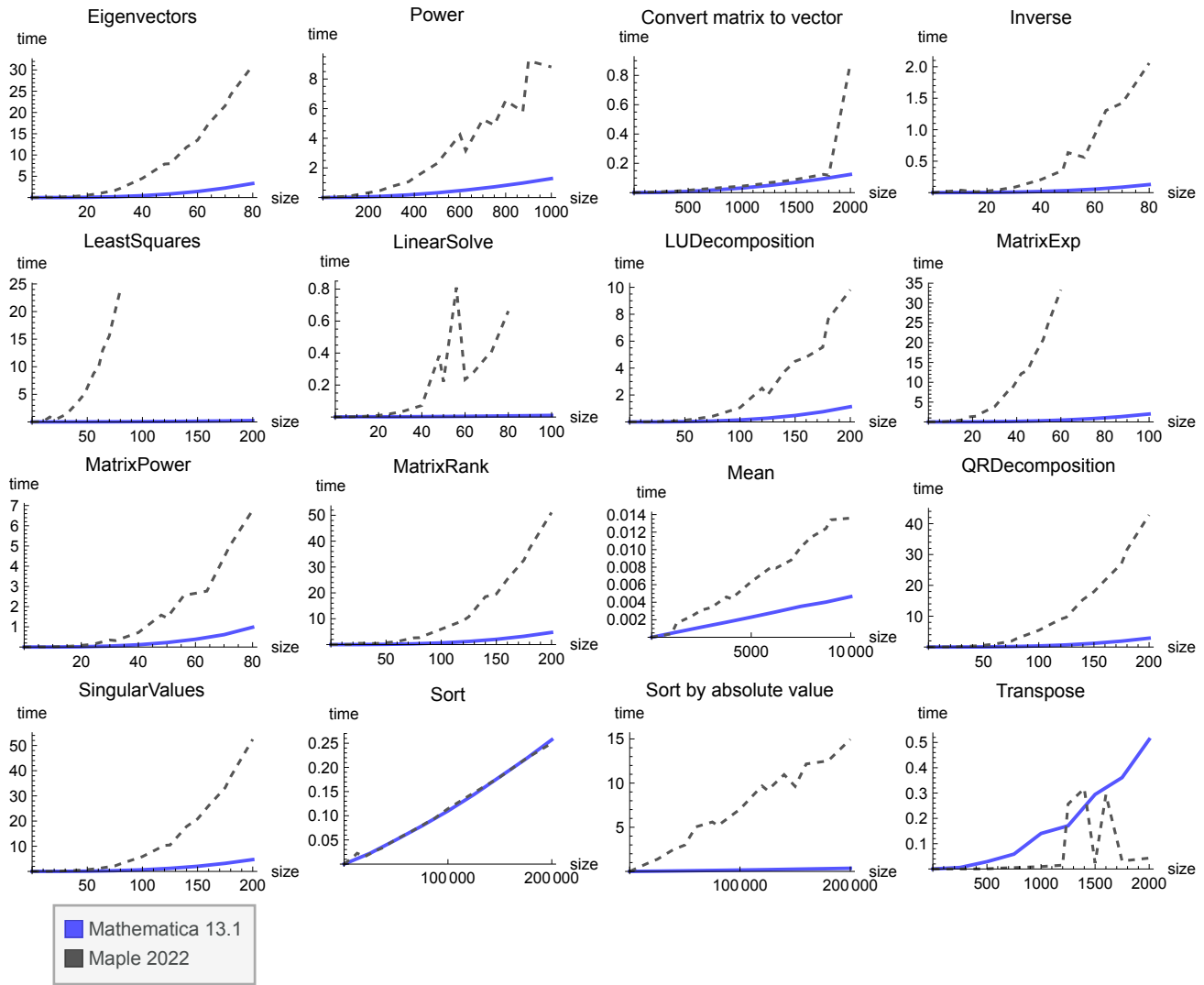
Maple cannot evaluate the `Inverse` task using the `integer[8]` type, so only default data type results are shown for this test.

Maple cannot evaluate `MatrixPower` with `integer[8]` matrices of size 500×500 or above.

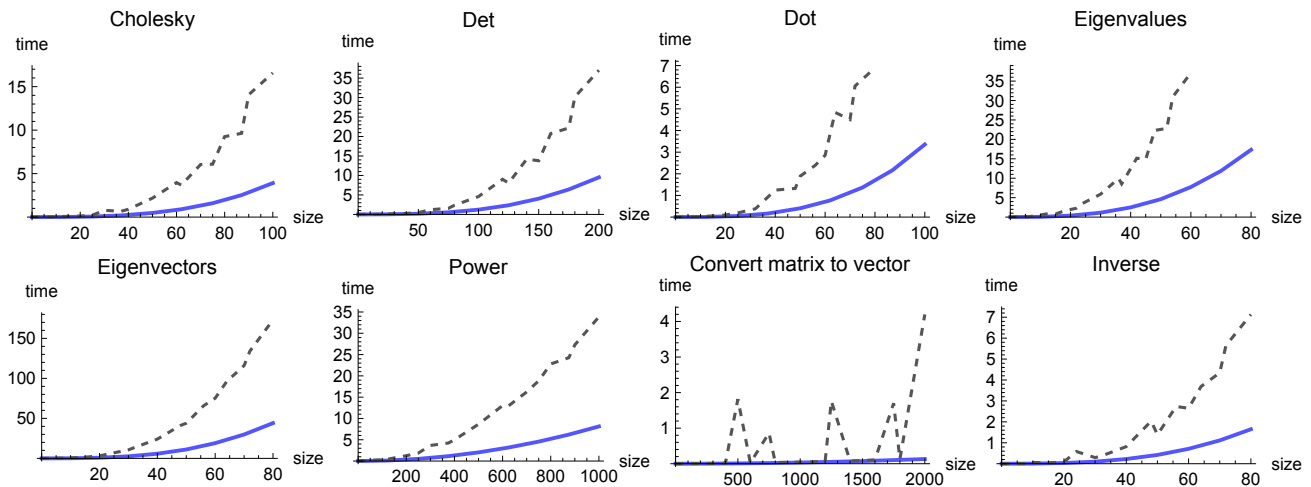
Extended-Precision Data

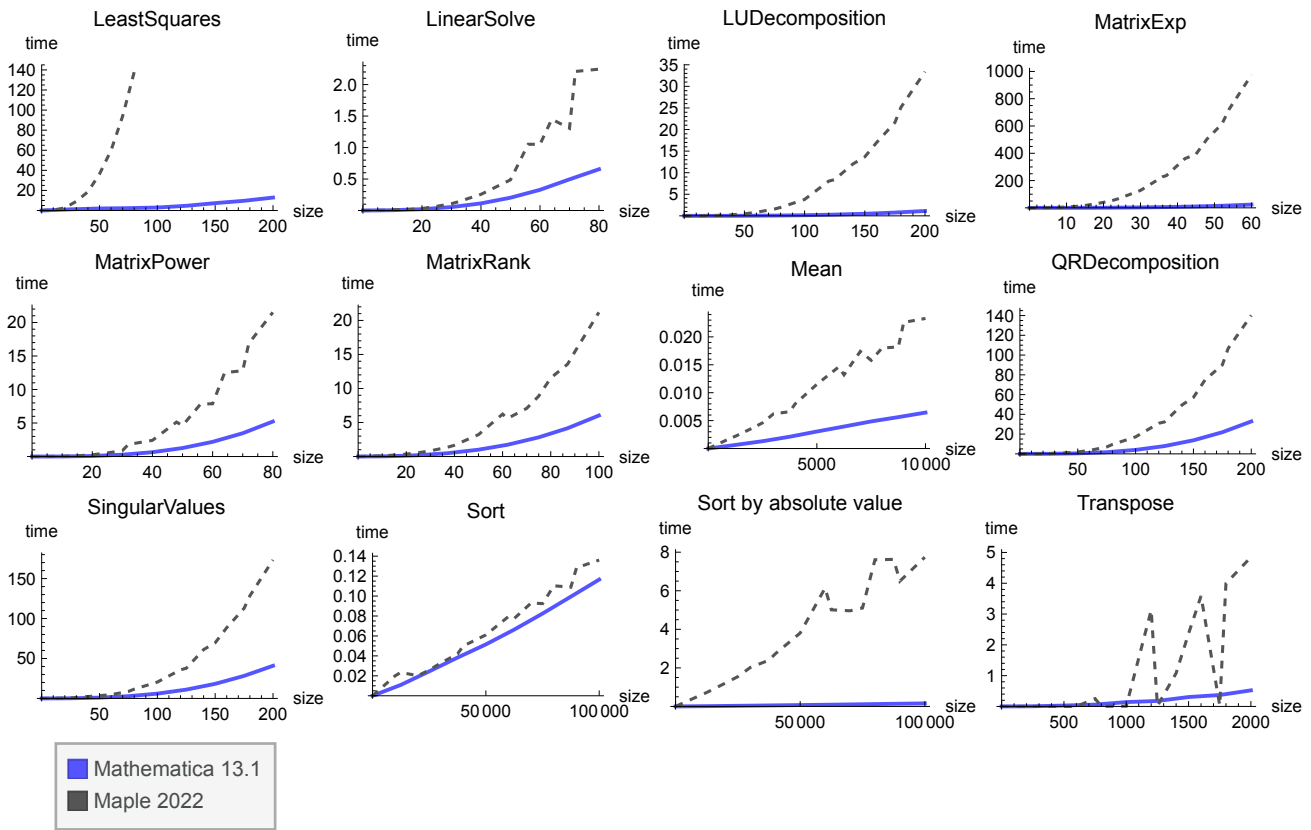
Both Mathematica and Maple handle arbitrary-precision arithmetic. Only Mathematica tracks the number of reliable digits in the results of such calculations, and yet despite doing this additional validation work, Mathematica was 69 times faster for 50-decimal-place matrix computations.





At 1,000-digit precision, much more of the work is done by the GMP library, but Maple is still 4 times slower than Mathematica.





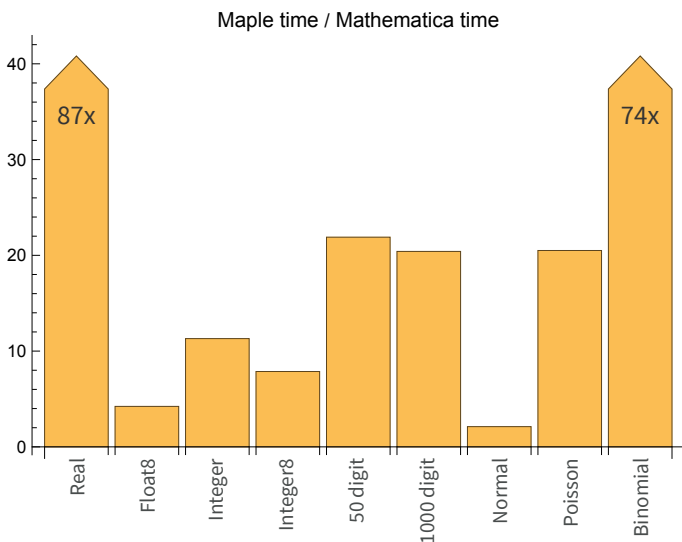
Implementation notes

Some Maple functions are limited to machine-precision numbers. For this reason, tests for `Fit` and `Fourier` have been omitted and `Mean` has been implemented using `add`.

Random Numbers

Median performance for random number generation shows Mathematica to be more than 20 times faster than Maple.

Matrices with 2,000 x 2,000 elements were generated for each number type using a uniform distribution [-10,10]. Normal, Poisson and binomial distributions were used to create a vector of 10^7 samples.



Implementation notes

Documented Maple commands were used in all cases.

Maple's default type for reals and its special `float[8]` data generation were both compared to the default data type in Mathematica.

Maple's default type for integers and its special `integer[8]` data generation were both compared to the default data type in Mathematica.

Maple's Poisson and binomial distributions (and other discrete distributions) generate real numbers, while Mathematica correctly generates integers.

General Testing Methodology

Tests were performed using Windows 10 Pro 64-bit with a 3.07 GHz quad-core Intel i7 processor with 24 GB of RAM. Tests were performed using Maple 2022 and Mathematica 13.1 default installations, except CUDA tests, which used Maple 15 and Mathematica 8.

Some tests have been scaled back to smaller problems in the Maple version to enable Maple to perform them in the available time and memory. Where standard Maple functions cannot perform the requested computations, tests have been excluded, or, where trivial, alternative Maple implementations have been created. See source code for details. Median values are calculated only from tests that Maple is able to perform.

For most functions, the test suite finds the average time for 5 evaluations for each size of problem, but high-precision evaluations were performed only once in each test run, since both systems cache the results for later reuse.

Maple is unable to perform the entire test suite in 24 GB of RAM, so where tests crashed or failed to complete within 24 hours, Maple was restarted and the test repeated. Such failures have not been included in the results. Mathematica tests were performed in a single run.

Relative performance ratios use the largest problem size for each test performed, except where the Maple test has had to be scaled back. In these cases, the available data has been fitted to the curve $ax^2 + bx$, and this model has been used to estimate a time for the largest problem size timed in Mathematica. For sparse function application, the Maple time has been estimated as a linear scaling of the reduced test time.

Source code for the tests is included so that results can be replicated independently.

Appendix: Test Source Code

Mathematica code

Test code

```

$HistoryLength = 0;
SetDirectory["C:\\Users\\jonm\\Desktop\\BenchmarkData"];
steps = 8;
repeats = 5;
maxVector = 10^5;
maxMatrix = 2000;
maxSparseMatrix = 20000;
makeData[type_, i_Real] := makeData[type, Round[i]];
makeData[type_, i_Integer] := Switch[type,
  "RealVector", RandomReal[{0, 1}, i],
  "RealMatrix", RandomReal[1, {i, i}],
  "UpperTriangularRealMatrix",
  UpperTriangularMatrix[UpperTriangularize[1 + makeData["RealMatrix", i]]],
  "ExtendedMatrix", RandomReal[1, {i, i}, WorkingPrecision -> 50],
  "ExtendedMatrix1000", RandomReal[1, {i, i}, WorkingPrecision -> 1000],
  "ExtendedVector", RandomReal[1, {i}, WorkingPrecision -> 50],
  "ExtendedVector1000", RandomReal[1, {i}, WorkingPrecision -> 1000],
  "IntegerMatrix", RandomInteger[100, {i, i}],
  "IntegerVector", RandomInteger[100, i],
  "SparseMatrix", SparseArray[Table[
    {RandomInteger[{1, i}], RandomInteger[{1, i}]} -> Random[], {i^2 / 10000}], {i, i}],
  "SparseVector",
  SparseArray[Table[RandomInteger[{1, i}] -> Random[], {Floor[i / 10000]}], {i, 1.}],
  "MediumSparseMatrix", SparseArray[Table[
    {RandomInteger[{1, i}], RandomInteger[{1, i}]} -> Random[], {i^2 / 200}], {i, i}],
  "ComplexMatrix", RandomComplex[{0, 1 + I}, {i, i}],
  "ComplexVector", RandomComplex[{0, 1 + I}, {i}],
  _, Print[type]
];

timedReport[path_, fn_, hi_, type_] := Block[{data},
  Export["Mathematica" <> ToString[$VersionNumber] <> path <> ".txt", Table[{Floor[t],
    Mean[Table[
      data = makeData[type, Floor[t]];
      AbsoluteTiming[fn[data]]][[1], {repeats}]]]
    , {t,  $\frac{hi}{steps}$ , hi,  $\frac{hi}{steps}$ }], "Table"]];

```

```

highPrecisionReport[path_, fns_, n_] :=
  Export["Mathematica" <> ToString[$VersionNumber] <> path <> ".txt",
    Map[AbsoluteTiming[N[#, n]]][[1]] &, fns];
NumericTest[path_, fns_List, n_, type_] :=
  Block[{data}, Export["Mathematica" <> ToString[$VersionNumber] <> path <> ".txt",
    Table[data = makeData[type, n];
      AbsoluteTiming[i[data]][[1]], {i, fns}]]];
evaluateTest[path_, expr_Hold] :=
  Export["Mathematica" <> ToString[$VersionNumber] <> path <> ".txt",
    Apply[List, First/@Map[AbsoluteTiming, expr]]]

```

Function evaluation

```

fnList = {Sqrt, Sin, Cos, Tan, ArcSin, ArcCos, ArcTan, Sec, Csc,
  Cot, Exp, Sinh, Cosh, Tanh, Log, Log10, Erf, Gamma, BesselJ[0, #] &,
  BesselK[1, #] &, BesselY[3, #] &, ArcSinh, ArcCosh[1 + #] &, ArcTanh, Zeta,
  # Sin[Log[#] + 2 * Sqrt[#] + 3] + Sqrt[#] + Log[#] &, Sin[Cos[#]] &, # Log[Sinh[#]] &,
  Erf[Sin[#]] &, Exp[#^2] &, PolyGamma, 1 + # &, 1 / # &, #^2 &, Mod[#, 0.5] &};
NumericTest["ElementaryFunctionsReal", fnList, maxVector, "RealVector"];
NumericTest["ElementaryFunctionsComplex", fnList, maxVector, "ComplexVector"];
NumericTest["ElementaryFunctionsExtended", fnList, maxVector / 10, "ExtendedVector"];
NumericTest["ElementaryFunctionsExtended1000",
  fnList, maxVector / 1000, "ExtendedVector1000"];
NumericTest["ElementaryFunctionsSparse", fnList, 100 000 maxVector, "SparseVector"];

```

Real matrix operations

```

timedReport["FourierReal", Fourier, maxVector, "RealVector"];
timedReport["SortReal", Sort, maxVector, "RealVector"];
timedReport["SortCustomReal", SortBy[#, Abs] &, maxVector, "RealVector"];
timedReport["MeanReal", Mean, 10 maxVector, "RealVector"];
timedReport["DotReal", #.# &, maxMatrix, "RealMatrix"];
timedReport["InverseReal", Inverse, maxMatrix, "RealMatrix"];
Quiet@
  timedReport["LinearSolveReal", LinearSolve[#, #[[1]]] &, maxMatrix, "RealMatrix"];
timedReport["CholeskyReal",
  CholeskyDecomposition[Transpose[#].#] &, maxMatrix, "RealMatrix"];
timedReport["MatrixPowerReal", MatrixPower[#, 5] &, maxMatrix, "RealMatrix"];
timedReport["DetReal", Det, maxMatrix, "RealMatrix"];
timedReport["TransposeReal", Transpose, maxMatrix, "RealMatrix"];
timedReport["FlattenReal", Flatten, maxMatrix, "RealMatrix"];
timedReport["EigenvaluesReal", Eigenvalues, maxMatrix / 2, "RealMatrix"];
timedReport["EigenvectorsReal", Eigenvectors, maxMatrix / 2, "RealMatrix"];

```

```

timedReport["LinearProgrammingReal",
  LinearProgramming[Abs[#[[1]]], Abs[#], Abs[#[[2]]], Method → "CLP"] &,
  maxMatrix, "RealMatrix"];
timedReport["ElementPowerReal", #^5 &, maxMatrix, "RealMatrix"];
timedReport["MovingAverageReal", MovingAverage[#, 10] &, maxVector, "RealVector"];
timedReport["FitReal", (Function[{data}, Fit[data, x, x][Transpose[{#, #}]]]) &;,
  4 * maxVector, "RealVector"];
timedReport["MatrixExpReal", MatrixExp, maxMatrix / 5, "RealMatrix"];
timedReport["CovarianceReal", Covariance, maxMatrix, "RealMatrix"];
timedReport["MatrixRankReal", MatrixRank, 3 maxMatrix, "RealMatrix"];
timedReport["LeastSquaresReal", LeastSquares[#, #[[1]]] &, maxMatrix, "RealMatrix"];
timedReport["LUDecompositionReal", LUDecomposition, maxMatrix, "RealMatrix"];
timedReport["SingularValuesReal", SingularValueList, maxMatrix, "RealMatrix"];
timedReport["QRDecompositionReal", QRDecomposition, maxMatrix, "RealMatrix"];

```

Complex matrix operations

```

timedReport["FourierComplex", Fourier, maxVector, "ComplexVector"];
timedReport["SortCustomComplex", SortBy[#, Abs] &, maxVector, "ComplexVector"];
timedReport["MeanComplex", Mean, 10 maxVector, "ComplexVector"];
timedReport["DotComplex", #.# &, maxMatrix, "ComplexMatrix"];
timedReport["InverseComplex", Inverse, maxMatrix, "ComplexMatrix"];
timedReport["LinearSolveComplex",
  LinearSolve[#, #[[1]]] &, maxMatrix, "ComplexMatrix"];
timedReport["CholeskyComplex",
  CholeskyDecomposition[ConjugateTranspose[#].#] &, maxMatrix, "ComplexMatrix"];
timedReport["MatrixPowerComplex", MatrixPower[#, 5] &, maxMatrix / 2, "ComplexMatrix"];
timedReport["DetComplex", Det, maxMatrix, "ComplexMatrix"];
timedReport["EigenvaluesComplex", Eigenvalues, maxMatrix / 2, "ComplexMatrix"];
timedReport["EigenvectorsComplex", Eigenvectors, maxMatrix, "ComplexMatrix"];

timedReport["TransposeComplex", Transpose, maxMatrix, "ComplexMatrix"];
timedReport["FlattenComplex", Flatten, maxMatrix, "ComplexMatrix"];
timedReport["ElementPowerComplex", #^5 &, maxMatrix, "ComplexMatrix"];
timedReport["MatrixExpComplex", MatrixExp, 1400, "ComplexMatrix"];
timedReport["MatrixRankComplex", MatrixRank, 3 maxMatrix, "ComplexMatrix"];
timedReport["LeastSquaresComplex", LeastSquares[#, #[[1]]] &, , "ComplexMatrix"];
timedReport["LUDecompositionComplex", LUDecomposition, maxMatrix, "ComplexMatrix"];
timedReport["QRDecompositionComplex", QRDecomposition, maxMatrix, "ComplexMatrix"];
timedReport["SingularValuesComplex", SingularValueList, maxMatrix, "ComplexMatrix"];

```

Sparse matrix operations

```

timedReport["DotSparse", #.# &, maxSparseMatrix, "SparseMatrix"];
Quiet@timedReport["LinearSolveSparse",
  LinearSolve[#, #[[1]]] &, maxSparseMatrix, "SparseMatrix"];
timedReport["TransposeSparse", Transpose, 2 * maxSparseMatrix, "SparseMatrix"];
timedReport["FlattenSparse", Flatten, maxSparseMatrix, "SparseMatrix"];
timedReport["ElementPowerSparse", #^5 &, maxSparseMatrix, "SparseMatrix"];

```

```

timedReport["MeanSparse", Mean, maxVector * 100, "SparseVector"];
timedReport["MatrixPowerSparse",
  MatrixPower[#, 5] &, 2 * maxSparseMatrix / 5, "SparseMatrix"];
timedReport["MovingAverageSparse",
  MovingAverage[#, 10] &, 10 maxVector, "SparseVector"];
timedReport["LeastSquaresSparse",
  LeastSquares[#, #[[1]]] &, maxMatrix, "ComplexMatrix"];

```

Upper triangular matrices

```

timedReport["DetUpperTriangularReal", Det, maxMatrix, "UpperTriangularRealMatrix"];
timedReport["EigenvaluesUpperTriangularReal",
  Eigenvalues, maxMatrix, "UpperTriangularRealMatrix"];
timedReport["EigenvectorsUpperTriangularReal",
  Eigenvectors, maxMatrix, "UpperTriangularRealMatrix"];
timedReport["InverseUpperTriangularReal",
  Inverse, maxMatrix, "UpperTriangularRealMatrix"];
timedReport["MatrixPowerUpperTriangularReal",
  MatrixPower[#, 5] &, maxMatrix, "UpperTriangularRealMatrix"];
timedReport["QRDecompositionUpperTriangularReal",
  QRDecomposition, maxMatrix, "UpperTriangularRealMatrix"];
timedReport["LUDecompositionUpperTriangularReal",
  LUDecomposition, maxMatrix, "UpperTriangularRealMatrix"];

```

Integer matrix operations

```

timedReport["DotInteger", #.# &, maxMatrix, "IntegerMatrix"];
timedReport["InverseInteger", Inverse, maxMatrix / 20, "IntegerMatrix"];
timedReport["LinearSolveInteger",
  LinearSolve[#, #[[1]]] &, maxMatrix / 4, "IntegerMatrix"];
timedReport["MatrixPowerInteger", MatrixPower[#, 5] &, maxMatrix / 4, "IntegerMatrix"];
timedReport["DetInteger", Det, 700, "IntegerMatrix"];
timedReport["TransposeInteger", Transpose, maxMatrix, "IntegerMatrix"];
timedReport["FlattenInteger", Flatten, maxMatrix, "IntegerMatrix"];
timedReport["MeanInteger", Mean, maxVector, "IntegerVector"];
timedReport["SortInteger", Sort, maxVector, "IntegerVector"];

timedReport["SortCustomInteger", SortBy[#, Abs] &, maxVector, "IntegerVector"];
timedReport["EigenvaluesInteger", Eigenvalues, maxMatrix / 30, "IntegerMatrix"];
timedReport["ElementPowerInteger", #^5 &, maxMatrix, "IntegerMatrix"];
timedReport["MatrixExpInteger", MatrixExp, 40, "IntegerMatrix"];

timedReport["MatrixRankInteger", MatrixRank, maxMatrix, "IntegerMatrix"];
timedReport["SingularValuesInteger",
  SingularValueList, maxMatrix / 50, "IntegerMatrix"];
timedReport["QRDecompositionInteger",
  QRDecomposition, maxMatrix / 50, "IntegerMatrix"];

```


50-digit precision operations

```

timedReport["DotExtended", #.# &, maxMatrix / 25 , "ExtendedMatrix"];
timedReport["InverseExtended", Inverse, maxMatrix / 25, "ExtendedMatrix"];
timedReport["CholeskyExtended",
  CholeskyDecomposition[Transpose[#].#] &, maxMatrix / 20, "ExtendedMatrix"];
timedReport["EigenvaluesExtended", Eigenvalues, 60, "ExtendedMatrix"];
timedReport["EigenvectorsExtended", Eigenvectors, 80, "ExtendedMatrix"];
timedReport["ElementPowerExtended", #^5 &, maxMatrix / 2, "ExtendedMatrix"];
timedReport["LinearSolveExtended",
  LinearSolve[#, #[[1]]] &, maxMatrix / 20, "ExtendedMatrix"];

timedReport["DetExtended", Det, maxMatrix / 10, "ExtendedMatrix"];
timedReport["TransposeExtended", Transpose, maxMatrix, "ExtendedMatrix"];
timedReport["FlattenExtended", Flatten, maxMatrix, "ExtendedMatrix"];
timedReport["MeanExtended", Mean, maxVector / 10, "ExtendedVector"];

timedReport["SortExtended", Sort, 2 * maxVector, "ExtendedVector"];
timedReport["SortCustomExtended", SortBy[#, Abs] &, 2 * maxVector, "ExtendedVector"];
timedReport["EigenvectorsExtended", Eigenvectors, maxMatrix / 25, "ExtendedMatrix"];
timedReport["MatrixPowerExtended",
  MatrixPower[#, 5] &, maxMatrix / 25, "ExtendedMatrix"];
timedReport["MatrixExpExtended", MatrixExp, 100, "ExtendedMatrix"];
timedReport["MatrixRankExtended", MatrixRank, maxMatrix / 10 , "ExtendedMatrix"];
timedReport["LeastSquaresExtended",
  LeastSquares[#, #[[1]]] &, maxMatrix / 10, "ExtendedMatrix"];
timedReport["LUDecompositionExtended",
  LUDecomposition, maxMatrix / 10, "ExtendedMatrix"];
timedReport["QRDecompositionExtended",
  QRDecomposition, maxMatrix / 10, "ExtendedMatrix"];
timedReport["SingularValuesExtended",
  SingularValueList, maxMatrix / 10 , "ExtendedMatrix"];

```

1000-digit precision operations

```

timedReport["DotExtended1000", #.# &, maxMatrix / 20 , "ExtendedMatrix1000"];
timedReport["InverseExtended1000", Inverse, maxMatrix / 25, "ExtendedMatrix1000"];
timedReport["CholeskyExtended1000",
  CholeskyDecomposition[Transpose[#].#] &, maxMatrix / 20, "ExtendedMatrix1000"];
timedReport["EigenvaluesExtended1000", Eigenvalues, 80, "ExtendedMatrix1000"];

timedReport["EigenvectorsExtended1000", Eigenvectors, 80, "ExtendedMatrix1000"];
timedReport["ElementPowerExtended1000", #^5 &, maxMatrix / 2, "ExtendedMatrix1000"];
timedReport["LinearSolveExtended1000",
  LinearSolve[#, #[[1]]] &, maxMatrix / 25, "ExtendedMatrix1000"];
timedReport["DetExtended1000", Det, maxMatrix / 10, "ExtendedMatrix1000"];
timedReport["TransposeExtended1000", Transpose, maxMatrix, "ExtendedMatrix1000"];
timedReport["FlattenExtended1000", Flatten, maxMatrix, "ExtendedMatrix1000"];

```

```

timedReport["MeanExtended1000", Mean, maxVector / 10, "ExtendedVector1000"];
timedReport["SortExtended1000", Sort, maxVector, "ExtendedVector1000"];
timedReport["SortCustomExtended1000",
  SortBy[#, Abs] &, maxVector, "ExtendedVector1000"];
timedReport["MatrixPowerExtended1000",
  MatrixPower[#, 5] &, maxMatrix / 25, "ExtendedMatrix1000"];
timedReport["MatrixExpExtended1000", MatrixExp, 60, "ExtendedMatrix1000"];
timedReport["MatrixRankExtended1000",
  MatrixRank, maxMatrix / 20, "ExtendedMatrix1000"];
timedReport["LeastSquaresExtended1000",
  LeastSquares[#, #[[1]]] &, maxMatrix / 10, "ExtendedMatrix1000"];

timedReport["LUDecompositionExtended1000",
  LUDecomposition, maxMatrix / 10, "ExtendedMatrix"];
timedReport["SingularValuesExtended1000",
  SingularValueList, maxMatrix / 10, "ExtendedMatrix1000"];
timedReport["QRDecompositionExtended1000",
  QRDecomposition, maxMatrix / 10, "ExtendedMatrix1000"];

```

Random numbers

```

In[ ]:= evaluateTest["RandomNumbers", Hold[
  makeData["RealMatrix", 2000],
  makeData["RealMatrix", 2000],
  makeData["IntegerMatrix", 2000],
  makeData["IntegerMatrix", 2000],
  makeData["ExtendedMatrix", 2000],
  makeData["ExtendedMatrix1000", 2000],
  RandomVariate[NormalDistribution[0, 1], 10^7],
  RandomVariate[PoissonDistribution[4], 10^7],
  RandomVariate[BinomialDistribution[10, 0.2], 10^7]
]];

```

High precision

```

highPrecisionReport["ManyDigits",
  {Pi, Sqrt[2], Sin[1] +  $\frac{1}{1 + \text{Sin}[1]}$ , Exp[1], Log[5], Tan[1 + I]}, 1000000];

highPrecisionReport["FewerDigits", {BesselK[2, 3], Gamma[11 / 3], Erf[10]}, 5000];

highPrecisionReport["Constants", {Pi, E, GoldenRatio}, 10000000];

```

Maple

```

mapleVersion := "Maple2022";
with (LinearAlgebra);
with (DiscreteTransforms);
with (combinat, fibonacci);
with (Statistics);
with (Student[Statistics]);
with (RandomTools[MersenneTwister]);
with (Optimization);
with (RandomTools);

```

```

with (stats);
with (combinat);
with (ArrayTools);
currentdir ("C:/Users/jonm/Desktop/BenchmarkData");
steps := 8;
repeats := 5;
maxVector := 10^5;
maxMatrix := 2000;
maxSparseMatrix := 20000;
makeData := proc (type, size) local dat, i;
    if type = "Vector" then dat := RandomVector[row] (size, generator = 0 .. 1.0);
    elif type = "Matrix" then dat := Generate (' Matrix' (float (range = -10 .. 10, method = uniform), size, size));
    elif type = "VectorFloat8" then dat := RandomVector[row] (size, generator = 0 .. 1.0, datatype = float[8]);
    elif type = "MatrixFloat8" then dat := RandomMatrix (size, size, generator = -10.0 .. 10.0, datatype = float[8]);
    elif type = "UpperTriangularFloat8" then dat := UpperTriangle (1.0+makeData ("MatrixFloat8", size));
    elif type = "UpperTriangularMatrix" then dat := UpperTriangle (1.0+makeData ("Matrix", size));
    elif type = "SparseMatrix" then dat := Matrix (size, size, storage = sparse); for i to floor (1/10000*size^2) do dat[RandomTools[Generate] (integer (range = 1 .. size)), Generate (integer (range = 1 .. size))] := 2*GenerateFloat (); end do;
    elif type = "MediumSparseMatrix" then dat := Matrix (size, size, storage = sparse); for i to floor (1/200*size^2) do dat[RandomTools[Generate] (integer (range = 1 .. size)), Generate (integer (range = 1 .. size))] := GenerateFloat (); end do;
    elif type = "SparseVector" then dat := Vector (size, 1.0, storage = sparse); for i to floor (1/10000*size) do dat[RandomTools[Generate] (integer (range = 1 .. size))] := GenerateFloat (); end do;
    elif type = "IntegerMatrix" then dat := Generate (' Matrix' (integer (range = -10 .. 10), size, size));
    elif type = "IntegerVector" then dat := Generate (' Vector' (integer (range = -10 .. 10), size));
    elif type = "IntegerMatrix8" then dat := Generate (' Matrix' (integer (range = -10 .. 10), size, size, datatype = integer[8]));
    elif type = "IntegerVector8" then dat := Generate (' Vector' (integer (range = -10 .. 10), size, datatype = integer[8]));
    elif type = "BigNumberMatrix" then dat := RandomMatrix (size, size, generator = (proc (x) 20*GenerateFloat (digits = 50) - 10; end proc));
    elif type = "BigNumberVector" then dat := RandomVector[row] (size, generator = (proc (x) 20*GenerateFloat (digits = 50) - 10; end proc));
    elif type = "BigNumberMatrix1000" then dat := RandomMatrix (size, size, generator = (proc (x) 20*GenerateFloat (digits = 1000) - 10; end proc));
    elif type = "BigNumberVector1000" then dat := RandomVector[row] (size, generator = (proc (x) 20*GenerateFloat (digits = 1000) - 10; end proc));
    elif type = "ComplexVector" then dat := makeData ("Vector", size) + makeData ("Vector", size)*i;
    elif type = "ComplexMatrix" then dat := makeData ("Matrix", size) + makeData ("Matrix", size)*i;
    elif type = "ComplexVector8" then dat := makeData ("VectorFloat8", size) + makeData ("VectorFloat8", size)*i;
    elif type = "ComplexMatrix8" then dat := makeData ("MatrixFloat8", size) + makeData ("MatrixFloat8", size)*i;
    else print (type); end if; dat; end proc;

timedDataOperation := proc (expr, size, type) local totaltime, data, i; totaltime := 0; for i to repeats do data := makeData (type, round (size)); totaltime := totaltime + time[real] (expr (data)); end do; totaltime/repeats; end proc;

timedReport := proc (filename, expr, hi, type) local s; ExportMatrix (cat (mapleVersion, filename, ".txt"), convert ([seq ([floor (s), timedDataOperation (' expr', floor (s), type)], s = hi/steps .. hi, hi/steps)], Matrix)); end proc;

numericfntest := proc (fn, n, type) local data; data := makeData (type, round (n)); time[real] (map (fn, data)); end proc;

numericrtest := proc (file, fns, n, type) local i; ExportMatrix (cat (mapleVersion, file, ".txt"), Matrix ([seq (numericfntest (i, n, type), i in fns)])); end proc;

numericrtestinplace := proc (file, fns, n, type) local i; ExportMatrix (cat (mapleVersion, file, ".txt"), Matrix ([seq (numericfntestinplace (i, n, type), i in fns)])); end proc;

numericrtestelementwise := proc (file, fns, n, type) local i; ExportMatrix (cat (mapleVersion, file, ".txt"), Matrix ([seq (elementwisefntest (i, n, type), i in fns)])); end proc;

numericfntestinplace := proc (fn, n, type) local data; data := makeData (type, round (n)); time[real] (Map (fn, data)); end proc;

elementwisefntest := proc (fn, n, type) local data; data := makeData (type, round (n)); time[real] (fn (data)); end proc;

highPrecisionTest := proc (file, fns, n) local i; ExportMatrix (cat (mapleVersion, file, ".txt"), Matrix ([seq (time[real] (evalf (i, n))), i in fns)])); end proc;

RandomInteger := proc (x, y) RandomTools[Generate] (integer (range = 1 .. 100)); end proc;

fnList := [sqrt, sin, cos, tan, arcsin, arccos, arctan, sec, csc, cot, exp, sinh, cosh, tanh, log, log10, erf, GAMMA, proc (x) BesselJ (0, x); end proc, proc (x) BesselK (1, x); end proc, proc (x) BesselY (3, x); end proc, arcsinh, proc (x) arccosh (x + 1); end proc, arctanh, Zeta, proc (x) x*sin (log (x) + 2*sqrt (x) + 3) + sqrt (x) + log (x); end proc, proc (x) sin (cos (x)); end proc, proc (x) log (sinh (x)); end proc, proc (x) erf (sin (x)); end proc, proc (x) exp (x^2); end proc, Psi, proc (x) x + 1; end proc, proc (x) 1/x; end proc, proc (x) x^2; end proc, proc (x) frem (x, 0.5); end proc];

elementwisefnList := [sqrt, sin, cos, tan, arcsin, arccos, arctan, sec, csc, cot, exp, sinh, cosh, tanh, log, log10, erf, GAMMA, proc (x) BesselJ (0, x); end proc, proc (x) BesselK (1, x); end proc, proc (x) BesselY (3, x); end proc, arcsinh, proc (x) arccosh (x + 1); end proc, arctanh, Zeta, proc (x) x*sin (log (x) + 2*sqrt (x) + 3) + sqrt (x) + log (x); end proc, proc (x) sin (cos (x)); end proc, proc (x) log (sinh (x)); end proc, proc (x) erf (sin (x)); end proc, proc (x) exp (x^2); end proc, Psi, proc (x) x + 1; end proc, proc (x) 1/x; end proc, proc (x) x^2; end proc, proc (x) frem (x, 0.5); end proc];

timedReport ("DotSparse", ' proc (x) x . x; end proc', maxSparseMatrix, "SparseMatrix");

```

```

timedReport ("FlattenSparse", ' proc (m) convert (m, Vector[row]); end proc', 10*maxMatrix, "SparseMatrix");
timedReport ("MatrixPowerSparse", ' proc (x) x^5; end proc', 4*maxMatrix, "SparseMatrix");
timedReport ("ElementPowerSparse", ' proc (m) map (proc (x) x^5; end proc, m); end proc', maxSparseMatrix, "SparseMatrix");
timedReport ("MeanSparse", ' Statistics : -Mean', 100*maxVector, "SparseVector");
timedReport ("LinearProgrammingSparse", ' proc (x) LPSolve (abs (Row (x, 1)), [-abs (x), -abs (Row (x, 2))], [0, infinity], iterationlimit = 1000); end proc',
1/10*maxSparseMatrix, "MediumSparseMatrix");
timedReport ("LinearSolveSparse", ' proc (x) LinearSolve (x, Column (x, 1), methodoptions = [maxiter = 10000]); end proc', maxSparseMatrix, "SparseMa-
trix");
timedReport ("TransposeSparse", ' Transpose', 2*maxSparseMatrix, "SparseMatrix");
timedReport ("FourierReal", ' FourierTransform', maxVector, "Vector");
timedReport ("SortReal", ' sort', maxVector, "Vector");
timedReport ("MeanReal", ' Statistics : -Mean', 2*maxVector, "Vector");
timedReport ("DotReal", ' proc (x) x . x; end proc', maxMatrix, "Matrix");
timedReport ("InverseReal", ' MatrixInverse', maxMatrix, "Matrix");
timedReport ("LinearSolveReal", ' proc (x) LinearSolve (x, Column (x, 1)); end proc', maxMatrix, "Matrix");
timedReport ("CholeskyReal", ' proc (S) LUDecomposition ((Transpose (S)) . S, method = ' Cholesky'); end proc', maxMatrix, "Matrix");
timedReport ("MatrixPowerReal", ' proc (x) x^5; end proc', maxMatrix, "Matrix");
timedReport ("DetReal", ' Determinant', maxMatrix, "Matrix");
timedReport ("TransposeReal", ' Transpose', maxMatrix, "Matrix");
timedReport ("FlattenReal", ' proc (m) convert (m, Vector[row]); end proc', maxMatrix, "Matrix");
timedReport ("EigenvaluesReal", ' Eigenvalues', 1/2*maxMatrix, "Matrix");
timedReport ("EigenvectorsReal", ' Eigenvectors', 1/2*maxMatrix, "Matrix");
timedReport ("LinearProgrammingReal", ' proc (x) LPSolve (abs (Row (x, 1)), [-abs (x), -abs (Row (x, 2))], [0, infinity]); end proc', maxMatrix/4, "Matrix");
timedReport ("ElementPowerReal", ' proc (m) map (proc (x) x^5; end proc, m); end proc', 1/2*maxMatrix, "Matrix");
timedReport ("FitReal", ' proc (m) Fit (b*x + a, m, m, x); end proc', maxVector, "Vector");
timedReport ("MatrixExpReal", ' MatrixExponential', maxMatrix/5, "Matrix");
timedReport ("CovarianceReal", ' CovarianceMatrix', maxMatrix, "Matrix");
timedReport ("MatrixRankReal", ' LinearAlgebra : -Rank', 3*maxMatrix, "Matrix");
timedReport ("LUDecompositionReal", ' LUDecomposition', maxMatrix, "Matrix");
timedReport ("LeastSquaresReal", ' proc (x) LeastSquares (x, Column (x, 1)); end proc', maxMatrix, "Matrix");
timedReport ("FourierFloat8", ' FourierTransform', maxVector, "VectorFloat8");
timedReport ("SortFloat8", ' sort', maxVector, "VectorFloat8");
timedReport ("MeanFloat8", ' Statistics : -Mean', 10*maxVector, "VectorFloat8");
timedReport ("DotFloat8", ' proc (x) x . x; end proc', maxMatrix, "MatrixFloat8");
timedReport ("InverseFloat8", ' MatrixInverse', maxMatrix, "MatrixFloat8");
timedReport ("LinearSolveFloat8", ' proc (x) LinearSolve (x, Column (x, 1)); end proc', maxMatrix, "MatrixFloat8");
timedReport ("CholeskyFloat8", ' proc (S) LUDecomposition ((Transpose (S)) . S, method = ' Cholesky'); end proc', maxMatrix, "MatrixFloat8");
timedReport ("MatrixPowerFloat8", ' proc (x) x^5; end proc', maxMatrix, "MatrixFloat8");
timedReport ("DetFloat8", ' Determinant', maxMatrix, "MatrixFloat8");
timedReport ("TransposeFloat8", ' Transpose', maxMatrix, "MatrixFloat8");
timedReport ("FlattenFloat8", ' proc (m) convert (m, Vector[row]); end proc', maxMatrix, "MatrixFloat8");
timedReport ("EigenvaluesFloat8", ' Eigenvalues', 1/2*maxMatrix, "MatrixFloat8");
timedReport ("EigenvectorsFloat8", ' Eigenvectors', 1/2*maxMatrix, "MatrixFloat8");
timedReport ("LinearProgrammingFloat8", ' proc (x) LPSolve (abs (Row (x, 1)), [-abs (x), -abs (Row (x, 2))], [0, infinity]); end proc', 1/4*maxMatrix,
"MatrixFloat8");
timedReport ("ElementPowerFloat8", ' proc (m) map (proc (x) x^5; end proc, m); end proc', 1/2*maxMatrix, "MatrixFloat8");
timedReport ("FitFloat8", ' proc (m) Fit (b*x + a, m, m, x); end proc', maxVector, "VectorFloat8");
timedReport ("MatrixExpFloat8", ' MatrixExponential', maxMatrix/5, "MatrixFloat8");
timedReport ("CovarianceFloat8", ' CovarianceMatrix', maxMatrix, "MatrixFloat8");
timedReport ("MatrixRankFloat8", ' LinearAlgebra : -Rank', 3*maxMatrix, "MatrixFloat8");
timedReport ("LUDecompositionFloat8", ' LUDecomposition', maxMatrix, "MatrixFloat8");
timedReport ("LeastSquaresFloat8", ' proc (x) LeastSquares (x, Column (x, 1)); end proc', maxMatrix, "MatrixFloat8");
timedReport ("LinearProgrammingReal", ' proc (x) LPSolve (abs (Row (x, 1)), [-abs (x), -abs (Row (x, 2))], [0, infinity]); end proc', maxMatrix, "Matrix");
timedReport ("LinearProgrammingFloat8", ' proc (x) LPSolve (abs (Row (x, 1)), [-abs (x), -abs (Row (x, 2))], [0, infinity]); end proc', maxMatrix,
"MatrixFloat8");
timedReport ("FourierComplex", ' FourierTransform', maxVector, "ComplexVector");
timedReport ("SortComplex", ' sort', maxVector, "ComplexVector");
timedReport ("DetUpperTriangularFloat8", ' Determinant', maxMatrix, "UpperTriangularFloat8");
timedReport ("EigenvaluesUpperTriangularFloat8", ' Eigenvalues', maxMatrix, "UpperTriangularFloat8");
timedReport ("EigenvectorsUpperTriangularFloat8", ' Eigenvectors', maxMatrix, "UpperTriangularFloat8");

```

```

timedReport ("InverseUpperTriangularFloat8", ' MatrixInverse', maxMatrix, "UpperTriangularFloat8");
timedReport ("MatrixPowerUpperTriangularFloat8", ' proc (x) x^5; end proc', maxMatrix, "UpperTriangularFloat8");
timedReport ("EigenvaluesUpperTriangularReal", ' Eigenvalues', maxMatrix, "UpperTriangularMatrix");
timedReport ("EigenvectorsUpperTriangularReal", ' Eigenvectors', maxMatrix, "UpperTriangularMatrix");
timedReport ("InverseUpperTriangularReal", ' MatrixInverse', maxMatrix, "UpperTriangularMatrix");
timedReport ("MatrixPowerUpperTriangularReal", ' proc (x) x^5; end proc', maxMatrix, "UpperTriangularMatrix");
timedReport ("LUDecompositionTriangularFloat8", 'LUDecomposition', maxMatrix, "UpperTriangularFloat8");
timedReport ("LUDecompositionTriangularReal", 'LUDecomposition', maxMatrix, "UpperTriangularMatrix");
timedReport ("QRDecompositionUpperTriangularFloat8", 'QRDecomposition', maxMatrix, "UpperTriangularFloat8");
timedReport ("QRDecompositionUpperTriangularReal", 'QRDecomposition', maxMatrix, "UpperTriangularMatrix");

timedReport ("DotComplex", ' proc (x) x . x; end proc', maxMatrix, "ComplexMatrix");
timedReport ("InverseComplex", ' MatrixInverse', maxMatrix, "ComplexMatrix");
timedReport ("LinearSolveComplex", ' proc (x) LinearSolve (x, Column (x, 1)); end proc', maxMatrix, "ComplexMatrix");
timedReport ("CholeskyComplex", ' proc (S) LUDecomposition ((map (conjugate, Transpose (S))) . S, method = ' Cholesky'); end proc', maxMatrix, "ComplexMatrix");
timedReport ("MatrixPowerComplex", ' proc (x) x^5; end proc', 1/2*maxMatrix, "ComplexMatrix");
timedReport ("MeanComplex", ' (Student[Statistics]) : -Mean', 1/3*maxVector, "ComplexVector");
timedReport ("DetComplex", ' Determinant', maxMatrix, "ComplexMatrix");
timedReport ("EigenvaluesComplex", ' Eigenvalues', 1/2*maxMatrix, "ComplexMatrix");
timedReport ("EigenvectorsComplex", ' Eigenvectors', maxMatrix, "ComplexMatrix");
timedReport ("TransposeComplex", ' Transpose', maxMatrix, "ComplexMatrix");
timedReport ("FlattenComplex", ' proc (m) convert (m, Vector[row]); end proc', maxMatrix, "ComplexMatrix");
timedReport ("ElementPowerComplex", ' proc (m) map (proc (x) x^5; end proc, m); end proc', 1/4*maxMatrix, "ComplexMatrix");
timedReport ("MatrixExpComplex", ' MatrixExponential', 1400, "ComplexMatrix");
timedReport ("MatrixRankComplex", ' LinearAlgebra : -Rank', 3*maxMatrix, "ComplexMatrix");
timedReport ("LUDecompositionComplex", ' LUDecomposition', maxMatrix, "ComplexMatrix");
timedReport ("LeastSquaresComplex", ' proc (x) LeastSquares (x, Column (x, 1)); end proc', maxMatrix, "ComplexMatrix");
timedReport ("FourierComplex8", ' FourierTransform', maxVector, "ComplexVector8");
timedReport ("SortComplex8", ' sort', maxVector, "ComplexVector");
timedReport ("MeanComplex8", ' (Student[Statistics]) : -Mean', 1/3*maxVector, "ComplexVector8");
timedReport ("DotComplex8", ' proc (x) x . x; end proc', maxMatrix, "ComplexMatrix8");
timedReport ("InverseComplex8", ' MatrixInverse', maxMatrix, "ComplexMatrix8");
timedReport ("LinearSolveComplex8", ' proc (x) LinearSolve (x, Column (x, 1)); end proc', maxMatrix, "ComplexMatrix8");
timedReport ("CholeskyComplex8", ' proc (S) LUDecomposition ((map (conjugate, Transpose (S))) . S, method = ' Cholesky'); end proc', maxMatrix, "ComplexMatrix8");
timedReport ("MatrixPowerComplex8", ' proc (x) x^5; end proc', 1/2*maxMatrix, "ComplexMatrix8");
timedReport ("DetComplex8", ' Determinant', maxMatrix, "ComplexMatrix8");
timedReport ("EigenvaluesComplex8", ' Eigenvalues', 1/2*maxMatrix, "ComplexMatrix8");
timedReport ("EigenvectorsComplex8", ' Eigenvectors', maxMatrix, "ComplexMatrix8");
timedReport ("TransposeComplex8", ' Transpose', maxMatrix, "ComplexMatrix8");
timedReport ("FlattenComplex8", ' proc (m) convert (m, Vector[row]); end proc', maxMatrix, "ComplexMatrix8");
timedReport ("ElementPowerComplex8", ' proc (m) map (proc (x) x^5; end proc, m); end proc', 1/4*maxMatrix, "ComplexMatrix8");
timedReport ("MatrixExpComplex8", ' MatrixExponential', maxMatrix/2, "ComplexMatrix8");
timedReport ("MatrixRankComplex8", ' LinearAlgebra : -Rank', 3*maxMatrix, "ComplexMatrix8");
timedReport ("LUDecompositionComplex8", ' LUDecomposition', maxMatrix, "ComplexMatrix8");
timedReport ("LeastSquaresComplex8", ' proc (x) LeastSquares (x, Column (x, 1)); end proc', maxMatrix, "ComplexMatrix8");
timedReport ("DotInteger", ' proc (x) x . x; end proc', maxMatrix, "IntegerMatrix");
timedReport ("InverseInteger", ' MatrixInverse', 1/20*maxMatrix, "IntegerMatrix");
timedReport ("LinearSolveInteger", ' proc (x) LinearSolve (x, Column (x, 1)); end proc', 1/4*maxMatrix, "IntegerMatrix");
timedReport ("MatrixPowerInteger", ' proc (x) x^5; end proc', 500, "IntegerMatrix");
timedReport ("DetInteger", ' Determinant', 700, "IntegerMatrix");
timedReport ("TransposeInteger", ' Transpose', maxMatrix, "IntegerMatrix");
timedReport ("FlattenInteger", ' proc (m) convert (m, Vector[row]); end proc', maxMatrix, "IntegerMatrix");
timedReport ("MeanInteger", ' (Student[Statistics]) : -Mean', maxVector, "IntegerVector");
timedReport ("SortInteger", ' sort', maxVector, "IntegerVector");
timedReport ("EigenvaluesInteger", ' Eigenvalues', 1/30*maxMatrix, "IntegerMatrix");
timedReport ("ElementPowerInteger", ' proc (m) map (proc (x) x^5; end proc, m); end proc', maxMatrix, "IntegerMatrix");
timedReport ("DotInteger8", ' proc (x) x . x; end proc', maxMatrix, "IntegerMatrix8");

```

```

timedReport ("LinearSolveInteger8", ' proc (x) LinearSolve (x, Column (x, 1)); end proc', 1/4*maxMatrix, "IntegerMatrix8");
timedReport ("MatrixPowerInteger8", ' proc (x) x^5; end proc', 1/4*maxMatrix, "IntegerMatrix8");
timedReport ("DetInteger8", ' Determinant', 700, "IntegerMatrix8");
timedReport ("TransposeInteger8", ' Transpose', maxMatrix, "IntegerMatrix8");
timedReport ("FlattenInteger8", ' proc (m) convert (m, Vector[row]); end proc', maxMatrix, "IntegerMatrix8");
timedReport ("MeanInteger8", ' (Student[Statistics]) :-Mean', maxVector, "IntegerVector8");
timedReport ("SortInteger8", ' sort', maxVector, "IntegerVector8");
timedReport ("EigenvaluesInteger8", ' Eigenvalues', 1/30*maxMatrix, "IntegerMatrix8");
timedReport ("ElementPowerInteger8", ' proc (m) map (proc (x) x^5; end proc, m); end proc', maxMatrix, "IntegerMatrix8");
steps := 3;
timedReport ("MatrixExpInteger8", ' MatrixExponential', 3, "IntegerMatrix8");
timedReport ("MatrixExpInteger", ' MatrixExponential', 3, "IntegerMatrix");
steps := 10;
timedReport ("SortCustomFloat8", ' proc (data) sort (data, proc (x, y) abs (y) < abs (x); end proc); end proc', maxVector/25, "VectorFloat8");
timedReport ("SortCustomReal", ' proc (data) sort (data, proc (x, y) abs (y) < abs (x); end proc); end proc', maxVector/25, "Vector");
timedReport ("SortCustomComplex", ' proc (data) sort (data, proc (x, y) abs (y) < abs (x); end proc); end proc', maxVector/25, "ComplexVector");
timedReport ("SortCustomComplex8", ' proc (data) sort (data, proc (x, y) abs (y) < abs (x); end proc); end proc', maxVector/25, "ComplexVector8");
timedReport ("SortCustomInteger", ' proc (data) sort (data, proc (x, y) abs (y) < abs (x); end proc); end proc', maxVector/25, "IntegerVector");
timedReport ("SortCustomInteger8", ' proc (data) sort (data, proc (x, y) abs (y) < abs (x); end proc); end proc', 100000, "IntegerVector8");
timedReport ("MatrixRankInteger", ' LinearAlgebra :-Rank', maxMatrix/5, "IntegerMatrix");
timedReport ("MatrixRankInteger8", ' LinearAlgebra :-Rank', maxMatrix/5, "IntegerMatrix8");
ExportMatrix(cat (mapleVersion, "RandomNumbers.txt"), Matrix ([[time[real] (makeData ("Matrix", 2000)), time[real] (makeData ("MatrixFloat8", 2000)),
time[real] (makeData ("IntegerMatrix", 2000)), time[real] (makeData ("IntegerMatrix8", 2000)), time[real] (makeData ("BigNumberMatrix", 2000)),
time[real] (makeData ("BigNumberMatrix1000", 2000)), time[real] (Sample (RandomVariable (Normal (0, 1)), 10^7)), time[real] (Sample (RandomVariable
(Poisson (4)), 10^7)), time[real] (Sample (RandomVariable (BinomialDistribution (10, 0.2)), 10^7))]]));

timedReport ("SingularValuesReal", ' SingularValues', maxMatrix, "Matrix");
timedReport ("SingularValuesFloat8", ' SingularValues', maxMatrix, "MatrixFloat8");
timedReport ("SingularValuesComplex", ' SingularValues', maxMatrix, "ComplexMatrix");
timedReport ("SingularValuesComplex8", ' SingularValues', maxMatrix, "ComplexMatrix8");
timedReport ("SingularValuesInteger", ' SingularValues', maxMatrix/50, "IntegerMatrix");
timedReport ("SingularValuesInteger8", ' SingularValues', maxMatrix/50, "IntegerMatrix8");
timedReport ("QRDecompositionReal", ' SingularValues', maxMatrix, "Matrix");
timedReport ("QRDecompositionFloat8", ' SingularValues', maxMatrix, "MatrixFloat8");
timedReport ("QRDecompositionComplex", ' QRDecomposition', maxMatrix, "ComplexMatrix");
timedReport ("QRDecompositionComplex8", ' QRDecomposition', maxMatrix, "ComplexMatrix8");
timedReport ("QRDecompositionInteger", ' QRDecomposition', maxMatrix/50, "IntegerMatrix");
timedReport ("QRDecompositionInteger8", ' QRDecomposition', maxMatrix/50, "IntegerMatrix8");
numericTest ("ElementaryFunctionsReal", fnList, maxVector, "Vector");
numericTest ("ElementaryFunctionsFloat8", fnList, maxVector, "VectorFloat8");
numericTest ("ElementaryFunctionsComplex", fnList, maxVector, "ComplexVector");
numericTest ("ElementaryFunctionsComplex8", fnList, maxVector, "ComplexVector8");
numericTestInplace ("ElementaryFunctionsInPlaceFloat8", fnList, maxVector, "VectorFloat8");
numericTestInplace ("ElementaryFunctionsInPlaceComplex", fnList, maxVector, "ComplexVector");
numericTestInplace ("ElementaryFunctionsInPlaceComplex8", fnList, maxVector, "ComplexVector8");
numericTestInplace ("ElementaryFunctionsInPlaceReal", fnList, maxVector, "Vector");
numericTestElementwise ("ElementaryFunctionsElementwiseFloat8", elementwisefnList, maxVector, "VectorFloat8");
numericTestElementwise ("ElementaryFunctionsElementwiseComplex", elementwisefnList, maxVector, "ComplexVector");
numericTestElementwise ("ElementaryFunctionsElementwiseComplex8", elementwisefnList, maxVector, "ComplexVector8");
numericTestElementwise ("ElementaryFunctionsElementwiseReal", elementwisefnList, maxVector, "Vector");
numericTestInplace ("ElementaryFunctionsInPlaceSparse", fnList, 10*maxVector, "SparseVector");
numericTest ("ElementaryFunctionsSparse", fnList, 10*maxVector, "SparseVector");
numericTestElementwise ("ElementaryFunctionsElementwiseSparse", elementwisefnList, 10*maxVector, "SparseVector");
highPrecisionTest ("ManyDigits", [' Pi', ' sqrt (2)', ' sin (1) + 1/(1 + sin (1))', ' exp (1)', ' log (5)', ' tan (1 + I)'], 1000000);
highPrecisionTest ("FewerDigits", [' BesselK (2, 3)', ' GAMMA (11/3)', ' erf (10)'], 5000);
Digits := 50;
timedReport ("DotExtended", ' proc (x) x . x; end proc', 1/25*maxMatrix, "BigNumberMatrix");
timedReport ("InverseExtended", ' MatrixInverse', 1/25*maxMatrix, "BigNumberMatrix");
timedReport ("EigenvaluesExtended", ' Eigenvalues', 60, "BigNumberMatrix");
timedReport ("LinearSolveExtended", ' proc (x) LinearSolve (x, Column (x, 1)); end proc', 1/25*maxMatrix, "BigNumberMatrix");

```



```

timedReport ("CholeskyExtended", ' proc (S) LUDecomposition ((Transpose (S)) . S, method = ' Cholesky'); end proc', 1/20*maxMatrix, "BigNumberMatrix");
timedReport ("MatrixPowerExtended", ' proc (x) x^5; end proc', 1/25*maxMatrix, "BigNumberMatrix");
timedReport ("DetExtended", ' Determinant', 1/10*maxMatrix, "BigNumberMatrix");
timedReport ("TransposeExtended", ' Transpose', maxMatrix, "BigNumberMatrix");
timedReport ("FlattenExtended", ' proc (m) convert (m, Vector[row]); end proc', maxMatrix, "BigNumberMatrix");
timedReport ("SortExtended", ' sort', 2*maxVector, "BigNumberVector");
timedReport ("MeanExtended", ' (Student[Statistics]) : -Mean', 1/10*maxVector, "BigNumberVector");
timedReport ("EigenvectorsExtended", ' Eigenvectors', 1/25*maxMatrix, "BigNumberMatrix");
timedReport ("ElementPowerExtended", ' proc (m) map (proc (x) x^5; end proc, m); end proc', 1/2*maxMatrix, "BigNumberMatrix");
timedReport ("MatrixExpExtended", ' MatrixExponential', 60, "BigNumberMatrix");
timedReport ("MatrixRankExtended", ' LinearAlgebra : -Rank', maxMatrix/10, "BigNumberMatrix");
timedReport ("SortCustomExtended", ' proc (data) sort (data, proc (x, y) abs (y) < abs (x); end proc); end proc', 2*maxVector, "BigNumberVector");
numericTest ("ElementaryFunctionsExtended", fnList, 1/10*maxVector, "BigNumberVector");
numericTestElementwise ("ElementaryFunctionsElementwiseExtended", elementwisefnList, 1/10*maxVector, "BigNumberVector");
numericTestInplace ("ElementaryFunctionsInPlaceExtended", fnList, 1/10*maxVector, "BigNumberVector");
timedReport ("SingularValuesExtended", ' SingularValues', maxMatrix/10, "BigNumberMatrix");
timedReport ("QRDecompositionExtended", ' QRDecomposition', maxMatrix/10, "BigNumberMatrix");
timedReport ("LUDecompositionExtended", ' LUDecomposition', maxMatrix/10, "BigNumberMatrix");
timedReport ("LeastSquaresExtended", ' proc (x) LeastSquares (x, Column (x, 1)); end proc', 1/25*maxMatrix, "BigNumberMatrix");
Digits := 1000;
timedReport ("DotExtended1000", ' proc (x) x . x; end proc', 1/25*maxMatrix, "BigNumberMatrix1000");
timedReport ("InverseExtended1000", ' MatrixInverse', 1/25*maxMatrix, "BigNumberMatrix1000");
timedReport ("EigenvaluesExtended1000", ' Eigenvalues', 60, "BigNumberMatrix1000");
timedReport ("LinearSolveExtended1000", ' proc (x) LinearSolve (x, Column (x, 1)); end proc', 1/25*maxMatrix, "BigNumberMatrix1000");
timedReport ("CholeskyExtended1000", ' proc (S) LUDecomposition ((Transpose (S)) . S, method = ' Cholesky'); end proc', 1/20*maxMatrix, "BigNumberMatrix1000");
timedReport ("MatrixPowerExtended1000", ' proc (x) x^5; end proc', 1/25*maxMatrix, "BigNumberMatrix1000");
timedReport ("DetExtended1000", ' Determinant', 1/10*maxMatrix, "BigNumberMatrix1000");
timedReport ("TransposeExtended1000", ' Transpose', maxMatrix, "BigNumberMatrix1000");
timedReport ("FlattenExtended1000", ' proc (m) convert (m, Vector[row]); end proc', maxMatrix, "BigNumberMatrix1000");
timedReport ("SortExtended1000", ' sort', maxVector, "BigNumberVector1000");
timedReport ("MeanExtended1000", ' (Student[Statistics]) : -Mean', 1/10*maxVector, "BigNumberVector1000");
timedReport ("EigenvectorsExtended1000", ' Eigenvectors', 1/25*maxMatrix, "BigNumberMatrix1000");
timedReport ("SingularValuesExtended1000", ' SingularValues', maxMatrix/10, "BigNumberMatrix1000");
timedReport ("QRDecompositionExtended1000", ' QRDecomposition', maxMatrix/10, "BigNumberMatrix1000");
timedReport ("ElementPowerExtended1000", ' proc (m) map (proc (x) x^5; end proc, m); end proc', 1/2*maxMatrix, "BigNumberMatrix1000");
timedReport ("MatrixExpExtended1000", ' MatrixExponential', 60, "BigNumberMatrix1000");
timedReport ("SortCustomExtended1000", ' proc (data) sort (data, proc (x, y) abs (y) < abs (x); end proc); end proc', maxVector, "BigNumberVector1000");
timedReport ("MatrixRankExtended1000", ' LinearAlgebra : -Rank', maxMatrix/20, "BigNumberMatrix");
timedReport ("LUDecompositionExtended1000", ' LUDecomposition', maxMatrix/10, "BigNumberMatrix1000");
timedReport ("LeastSquaresExtended1000", ' proc (x) LeastSquares (x, Column (x, 1)); end proc', 1/25*maxMatrix, "BigNumberMatrix1000");

```